

Sustainable Land Use and Land Management:

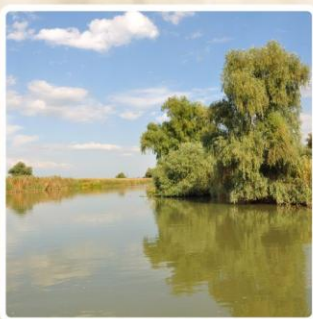
*Emerging Trends, Current Challenges,
and European Solutions*

Organized in the framework of the
Horizon Europe-funded project Europe-LAND



PROGRAMME

Online Symposium
16th May 2025



Sustainable Land Use and Land Management

Online Symposium, 16th May 2025

Zoom Access Link:

<https://us06web.zoom.us/j/84172989312?pwd=TDbDABITslQ1CthuOR9cUB90WtHnqx.1>

Meeting-ID: 841 7298 9312, Passcode: 472254

09:00-10:00 (CEST): Opening Session (Chair: Franziska Wolf, HAW Hamburg)

Dr. Franziska Wolf (HAW Hamburg, Germany) – *Welcoming and short presentation of the Europe-LAND Project*

Dr. Monica Dumitrascu (Institute of Geography, Romania), Chair of the IGU Land Use/Land Cover Change Commission - *Land Use and Land Cover Changes in a Global Environmental Change Context. The Contribution of IGU LUCC Commission*

Dr. Mihaela Sima (Institute of Geography, Romania) – *Overview of the online symposium*

9:20-9:40 – Korinna Varga (Hungarian Research Institute of Organic Agriculture), Yann Raineau, Torsten Rodel Berg, Gerald Schwarz, Nicolas Tinois and Ulrike Ziegler – *The AGROECOLOGY Partnership & Network – an opportunity to accelerate agroecology transition through Living Labs and Research Infrastructure in Europe*

9:40-10:00 – Mihaela Sima and all Europe-Land partners – *Land sustainability challenges and Land Futures in Europe. The Europe-LAND stakeholders' perspective*

10:00-10:10 – *Break*

10:10-11:40 (CEST): Session 1A - Socio-cultural perspectives on Land (Chair: Mihaela Sima, IGAR, Romania)

10:10-10:30: Veronika Gaube (Institute of Social Ecology, BOKU University, Austria) - *Long-term Socio-Ecological Research (LTSER) platforms as places of knowledge integration in the emerging European Research Infrastructure eLTER*

10:30-10:50: Samantha Tobiaš (IRC Government of Ireland Scholar, School of Archaeology, University College Dublin, Ireland) - *Between Nature, Culture, and Community: Assessing the Vulnerability of Cultural Landscapes and Biocultural Heritage to Climate Change*



**Funded by
the European Union**

Funded by the European Union (10108307). Views and opinions expressed are however those of the author(s) only and do not necessarily reflect those of the European Union or EC-CINEA. Neither the European Union nor the granting authority can be held responsible for them.

10:50-11:10: Danka Moravcikova (Slovak University of Agriculture in Nitra, Slovakia) - *Redefining 'LAND' in the era of commodification and globalization*

11:10-11:30: Andreia Sina Arbenz, Gabriele Mack, Jeanine Ammann, Niklas Möhring (Agroscope, Switzerland; Production Economics Group, University of Bonn, Germany) - *A holistic assessment of farmers' intention to adopt agroecological practices – the case of Swiss grassland*

11:30-11:40: Discussions

10:10-11:40 (CEST): Session 1B – Policies and tools for sustainable land use and land management (Chair: Monica Dumitrascu, IGAR, Romania)

10:10-10:30: Joanna Ejdyś, Joanna Godlewska, Elżbieta Broniewicz, Zofia Kołoszko-Chomentowska, Karolina Ogrodnik (Białystok University of Technology, Poland) - *Policy incentives and instruments related to land-use decisions - assessment criteria*

10:30-10:50: Tommaso Brazzini, Daniel García Yustos, Noelia Ferreras-Alonso, Iván Ramos-Diez, Sara Barilari, Mónica Aparicio, David Vegas, Sara Pérez, Margarita Mediavilla (University of Valladolid, Spain and CARTIF Foundation, Spain) - *Local system dynamics model capabilities for adaptation and mitigation policies assessment: the RethinkAction local model*

10:50-11:10: K. Plataridis, N. Theodossiou, C. Stavridis (Aristotle University of Thessaloniki, Greece) – *Integrating GIS information under a common platform: The Europe-LAND Toolbox*

11:10-11:30: Erimma Gloria Orié (Department of Private & Property Law Faculty of Law, National Open University of Nigeria, Nigeria) - *Legal Implications of Climate Change and Biodiversity Policies for Sustainable Land Use and Land Management: Adopting EU best practices for Nigeria*

11:30-11:40: Discussions

11:40-12:00 – Break

12:00-13:30 (CEST): Session 2A – Integrated models, data and tools for Land Use and Land Management (Chair: Joanna Ejdyś, BUT, Poland)

12:00-12:20: Andrea Ackermann (Thünen Institute, Germany) - *IACS utilisation at Thuenen-Institute in research, monitoring and counseling*

12:20-12:40: Claudine Egger (Institute of Social Ecology, BOKU University, Austria) - *Future land use in the Austrian case study Eisenwurzen - the land use decision model SECLAND*

12:40-13:00: Anna Małek, Katarzyna Kocur-Bera (Poznan University of Technology, Institute of Civil Engineering, Poznań, Poland; University of Warmia and Mazury in Olsztyn, Institute of



Funded by
the European Union

Funded by the European Union (10108307). Views and opinions expressed are however those of the author(s) only and do not necessarily reflect those of the European Union or EC-CINEA. Neither the European Union nor the granting authority can be held responsible for them.

Geodesy and Civil Engineering, Poland) - *Use of multispectral imaging in the land consolidation process*

13:00-13:20: Janis Krumins (Department of Environmental Science, University of Latvia) - *Modeling Pathways for Sustainable Land Use in the North Vidzeme Biosphere Reserve*

13:20-13:30: Discussions

12:00-13:30 (CEST): Session 2B – Integrated Strategies for Land Use and Land Management (Chair: Žiga Malek, Biotechnical Faculty, University of Ljubljana, Slovenia)

12:00-12:20: Žiga Malek (Biotechnical Faculty, University of Ljubljana, Slovenia; International Institute for Applied Systems Analysis - IIASA, Laxenburg, Austria) - *Synergies and trade-offs of land-based climate change mitigation and adaptation in Europe*

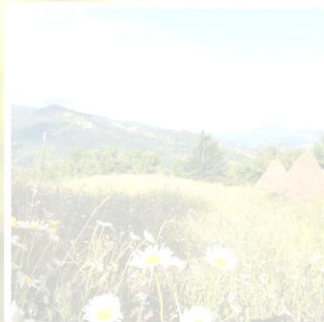
12:20-12:40: Monika Kopecká, Daniel Szatmári, Tomáš Goga, Kateryna Polyvach (Institute of Geography of the Slovak Academy of Sciences, Bratislava, Slovakia) - *Land Consolidation as a Tool of Sustainable Land Use Management – Challenges from Slovakia*

12:40-13:00: Anton Shkaruba and Ruthi Vebiakkim (Estonian University of Life Sciences, Estonia) - *Ecosystem disservices as a tool for inclusive spatial planning*

13:00-13:20: Tijana Dabovic (University of Belgrade, Faculty of Geography, Serbia) - *Geodesign as an alternative approach to land use planning in Serbia*

13:20-13:30: Discussions

13:30-13:40 (CEST): Conclusions and closure



**Funded by
the European Union**

Funded by the European Union (10108307). Views and opinions expressed are however those of the author(s) only and do not necessarily reflect those of the European Union or EC-CINEA. Neither the European Union nor the granting authority can be held responsible for them.